

IDAHO



STATE DEPARTMENT
OF AGRICULTURE



Fire Effects on Livestock



Idaho Cattle's Economy

- 2.6 million cattle in the state
- \$2.7 billion in cash receipts
 - Nearly $\frac{1}{4}$ of Idaho agriculture's total



- Information prepared by UI CALS
- Cow-calf budget for 300 head operation utilizing federal and private ground
- Extremely slim margins
- Total costs - \$307,000 for a good year
 - 1% cow death loss
 - 85% calf crop
 - 15% cow culling

TOTAL GROSS RETURNS				\$213,064	\$710.21
OPERATING COSTS					
Alfalfa Hay	ton	108	180.25	19,467	64.89
Meadow Hay	ton	557	145.00	80,765	269.22
Protein Supplement	cwt	590	34.00	20,060	66.87
Federal Range	AUM	1,776	1.35	2,398	7.99
State Range	AUM	144	7.32	1,054	3.51
Crop Aftermath	AUM	668	19.50	13,026	43.42
Salt/Mineral	cwt	61	11.00	671	2.24
Veterinary/Medicine	\$	1	8,268.53	8,269	27.56
Freight/Trucking to Market	head	55	5.00	275	0.92
Freight/Trucking to & from Pasture	head	312	3.75	1,170	3.90
Hired Labor	hour	480	18.19	8,731	29.10
Owner Labor	hour	2,100	31.12	65,352	217.84
Commission	head	55	20.71	1,139	3.80
Checkoff/Brand Inspection	head	257	2.96	761	2.54
Machinery (Fuel, Oil, Repair)	\$	1	4,286.70	4,287	14.29
Vehicles (Fuel, Repair)	\$	1	7,701.43	7,701	25.67
Equipment (Repair)	\$	1	1,170.07	1,170	3.90
Buildings & Improvements (Repair)	\$	1	1,701.92	1,702	5.67
Interest on Operating Capital	\$	59,499	5.00%	2,975	9.92
TOTAL OPERATING COSTS				\$240,972	\$803.24
NET RETURNS ABOVE OPERATING COSTS				(\$27,909)	-\$93.03
OWNERSHIP COSTS					
Capital Recovery:					
Purchased Livestock	\$	1	18,743	18,743	62.48
Buildings & Improvements	\$	1	6,725	6,725	22.42
Machinery	\$	1	4,515	4,515	15.05
Equipment	\$	1	1,213	1,213	4.04
Vehicles	\$	1	5,713	5,713	19.04
Interest on Retained Livestock	\$	462,000	5.06%	23,377	77.92
Taxes & Insurance	\$	1	1,000	1,000	3.33
General Overhead	\$	1	5,000	5,000	16.67
TOTAL OWNERSHIP COSTS				\$66,286	\$220.95

Fire Losses

- Difficult to assess immediate loss of life due to fire
 - Access to burned areas
 - Cattle forced to flee
- Loss of genetics can set a herd back years
- Loss of infrastructure – barns, fences, etc.
- Photo credit: Emmett Messenger



Fire Losses

- Long term impacts to cattle that survive
 - Injury to mobility
 - Eye damage, hoof damage, lung damage from smoke inhalation
 - Lung damage can take weeks or months to heal
 - Injury to reproduction or ability to keep current calf
 - Burned udders, edema
 - Cow longevity & productivity



After Fire Recovery

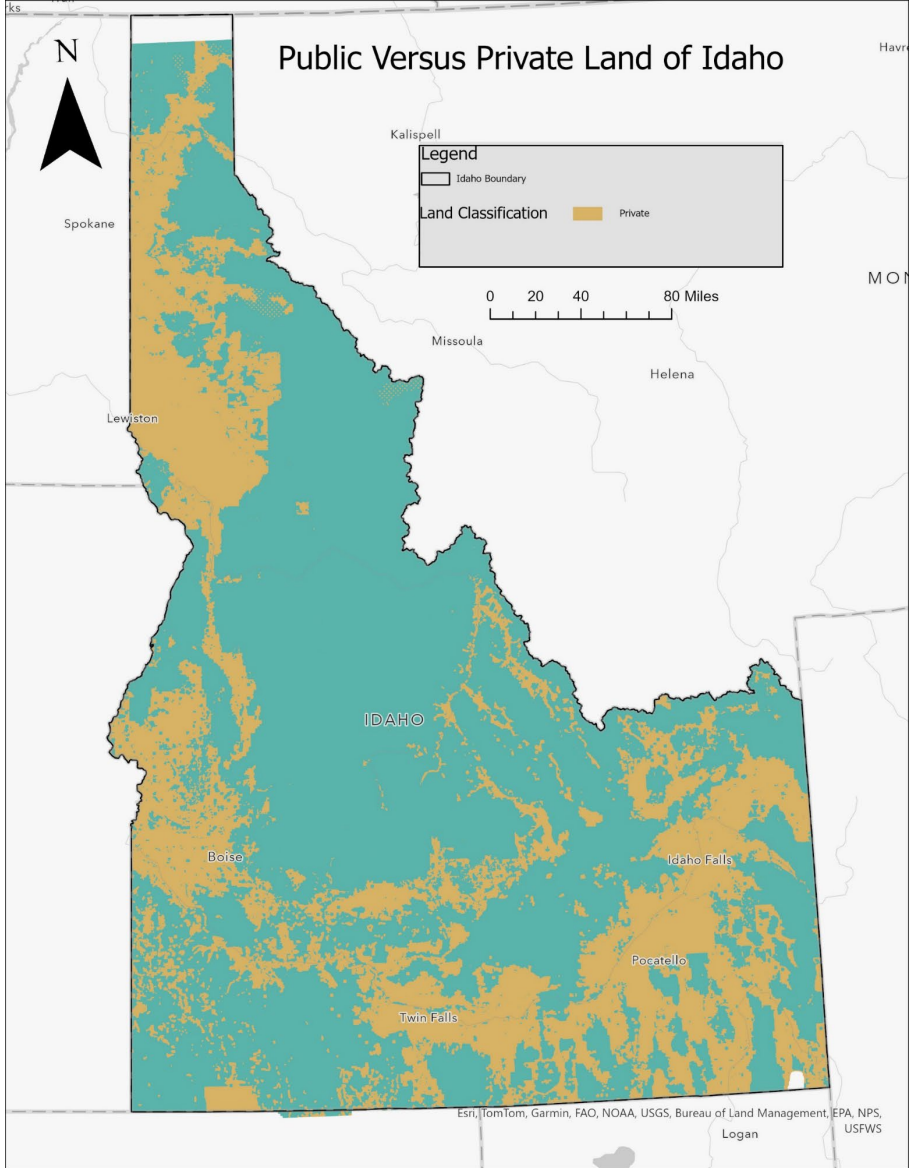
- BLM and USFS may have allotments closed for years following a fire
- Where do producers go in the interim?
- Animal care issues
- Significant potential to put producers out of business permanently







Losses





IDAHO



STATE DEPARTMENT
OF AGRICULTURE



Questions?